

# **MOHAWK**

## **PRE-EXISTING SLAB REQUIREMENTS & NEW SLAB RECOMMEDATIONS**



### **MOHAWK RESOURCES LTD.**

65 VROOMAN AVE.  
AMSTERDAM, NY 12010  
**TOLL FREE : 1-800-833-2006**  
**LOCAL : 1-518-842-1431**  
**FAX : 1-518-842-1289**  
**INTERNET: [www.MOHAWKLIFTS.com](http://www.MOHAWKLIFTS.com)**  
**E-MAIN: [Service@MOHAWKLIFTS.com](mailto:Service@MOHAWKLIFTS.com)**

# Mohawk Resources Ltd.



## PRE-EXISTING Minimum Floor Requirements

Mohawk Lift Model	Minimum Slab Thickness	Minimum Compressive Strength	Reinforcement Size	Reinforcement Spacing (Rebar)
A-7	4-1/2"	4000 psi with 28 day aging	#6 rebar	12 in.
System IA	4-1/2"	4000 psi with 28 day aging	#6 rebar	12 in.
System IA-10	4-1/2"	4000 psi with 28 day aging	#6 rebar	12 in.
LC-12	6 1/2"	4000 psi with 28 day aging	#6 rebar	12 in.
LMF-12	6 1/2"	4000 psi with 28 day aging	#6 rebar	12 in.
TP-15	6 1/2"	4000 psi with 28 day aging	#6 rebar	10 in.
TP-16	6 1/2"	4000 psi with 28 day aging	#6 rebar	10 in.
TP-18	6 1/2"	4000 psi with 28 day aging	#6 rebar	10 in.
TP-20	6 1/2"	4000 psi with 28 day aging	#6 rebar	10 in.
TP-20-WB	6 "	4000 psi with 28 day aging	#6 rebar	10 in.
TP-26	12"	4000 psi with 28 day aging	#6 rebar	10 in.
TP-26-WB	8"	4000 psi with 28 day aging	#6 rebar	10 in.
TP-30	12"	4000 psi with 28 day aging	#6 rebar	10 in.
TP-30-WB	8"	4000 psi with 28 day aging	#6 rebar	10 in.
TR-19	4 1/2"	n/a	ACI Temp only*	ACI Temp only*
FL-25	4 1/2"	n/a	ACI Temp only*	ACI Temp only*
TR-25A	4 1/2"	n/a	ACI Temp only*	ACI Temp only*
TR-30	4 1/2"	n/a	ACI Temp only*	ACI Temp only*
TR-33	6" or (4 1/2" **)	n/a	ACI Temp only*	ACI Temp only*
TR-35	6" or (4 1/2" **)	n/a	ACI Temp only*	ACI Temp only*
TR-50	6" or (4 1/2" **)	n/a	ACI Temp only*	ACI Temp only*
TR-75	6" or (4 1/2" **)	n/a	ACI Temp only*	ACI Temp only*

\* The floor must be properly aged to American Concrete Institute specifications. The floor does not require reinforcement, but a minimum of 4" x 4" x 10/10 wire mesh is recommended.

\*\* Larger 4' x 4' base pads (available from Mohawk) required for floors with a thickness range less than 6", but greater or equal to 4 1/2".

The floor should be test drilled to verify minimum floor thickness and to confirm building drawings. A core sample should be obtained and tested to verify minimum floor compressive strength. When investigating floor properties, consult building drawings to verify proper floor reinforcement.

All 2-post lifts require a continuous single slab. Spanning expansion seams or positioning posts on separate slabs is not acceptable.

### --- ALL MOHAWK LIFTS MUST BE INSTALLED ON CONCRETE ONLY ---

**DO NOT** install any Mohawk lift on any surface other than concrete, conforming to the minimum compressive strength, aging, reinforcement, and thickness stated in the table above.

**DO NOT** install any Mohawk lift on expansion seams or on cracked or defective concrete. All 3/4 inch diameter anchors must be a minimum of 6 inches away from any expansion seams, control joints or other inconsistencies in the concrete. All 1 inch diameter anchors must be a minimum of 7 1/2 inches away from any expansion seams, control joints or other inconsistencies in the concrete. Refer to anchor manufacturer specifications for specific information concerning edge distances and bolt to bolt distance requirements.

**NEVER, NEVER** install a Mohawk lift on hand mixed concrete.

**DO NOT** install any Mohawk lift on a secondary floor level or on any ground floor with a basement beneath without written authorization from the building architect and prior consultation and approval from Mohawk Resources Ltd.

If the floor does not meet these minimum pre-existing floor requirements, it is suggested to construct a slab as outlined in ***New Slab Recommendations***. If the location of the lift is in a seismic zone, additional provisions will need to be considered, and it is recommended to consult a building architect or engineer.

## **New Slab Recommendations:**

The information contained in this appendage supercedes any other information given in the accompanied manual. This information is presented for design recommendations for a new concrete slab in the event that the pre-existing floor does not meet minimum requirements of the applicable lift type. Please read all instructions below carefully before producing new slab.

### **Basic Concrete Requirements:**

Minimum Tensile Strength of Concrete:	4,000 P.S.I.
Minimum Aging of New Concrete Slab:	28 days (cure time)
Minimum Thickness of Concrete Slab:	See New Slab Table & Figure Attached
Minimum Width and Length of Slab:	See New Slab Table & Figure Attached

All properties of the new concrete slab are mandatory and must conform to the above stated properties before installation of the lift is deemed acceptable. The new slab must be totally surrounded by an existing concrete floor. Certified strength documentation should be obtained from the firm who supplies the concrete mixture at the time of the pour.

The slab above is designed as “stand alone” and does not take into account the contribution of strength from surrounding concrete. It may be desirable to reinforce the new slab to the pre-existing surrounding floor. Care should be taken to locate these specific reinforcement bars away from any anchor positions of the specific lift.

This new slab design does not account for second floor installations or installations in a ground floor with a basement beneath. For this case, the lift should not be installed without written authorization from the building architect.

All ¾ inch diameter anchors must be a minimum of 6 inches away from any expansion seams, control joints or other inconsistencies in the concrete. All 1 inch diameter anchors must be a minimum of 7 ½ inches away from any expansion seams, control joints or other inconsistencies in the concrete. Refer to anchor manufacturer specifications for specific information concerning edge distances and bolt to bolt distance requirements.

NEVER, NEVER, hand mix your own concrete.

## New Slab Recommendations

File: New-slab.xls

Rev Date: 5/16/2012

**NEW SLABS MUST BE 12" THICK MINIMUM !! (See Notes Below)**

Lift Model	W Slab Width, (Inches)	L Slab Length, (Inches)	R Reinforcement Size, (Inch) (See Note 1 & 2)	S1 & S2 Reinforcement Spacing, (Inch) (See Note 3)	D Wej-it Dia, (Inch)	I Wej-it Length, (Inch)
A-7	48" Min	144" Min	8 - #4 - Main Bars 21 - #4 - Temperature Bars	6 in - Long Bars 8 in - Short Bars	3/4 in	5 in
System IA	48" Min	161" Min	8 - #4 - Main Bars 21 - #4 - Temperature Bars	6 in - Long Bars 8 in - Short Bars	3/4 in	5 in
System IA-10	48" Min	161" Min	8 - #4 - Main Bars 21 - #4 - Temperature Bars	6 in - Long Bars 8 in - Short Bars	3/4 in	5 in
LC-12	72" Min	168" Min	12 - #4 - Main Bars 23 - #4 - Temperature Bars	6 in - Long Bars 8 in - Short Bars	3/4 in	6 in
LMF-12	72" Min	168" Min	12 - #4 - Main Bars 23 - #4 - Temperature Bars	6 in - Long Bars 8 in - Short Bars	3/4 in	6 in
TP-15	72" Min	168" Min	12 - #4 - Main Bars 23 - #4 - Temperature Bars	6 in - Long Bars 8 in - Short Bars	3/4 in	6 in
TP-16	72" Min	168" Min	12 - #4 - Main Bars 23 - #4 - Temperature Bars	6 in - Long Bars 8 in - Short Bars	3/4 in	6 in
TP-18 (2012)	72" Min	168" Min	12 - #4 - Main Bars 23 - #4 - Temperature Bars	6 in - Long Bars 8 in - Short Bars	3/4 in	6 in
TP-20	72" Min	186" Min	18 - #4 - Main Bars 24 - #4 - Temperature Bars	4 in - Long Bars 8 in - Short Bars	3/4 in	6 in
TP-20-WB	72" Min	186" Min	18 - #4 - Main Bars 24 - #4 - Temperature Bars	4 in - Long Bars 8 in - Short Bars	3/4 in	6 in
TP-26	72" Min	198" Min	18 - #4 - Main Bars 24 - #4 - Temperature Bars	4 in - Long Bars 8 in - Short Bars	1 in	10 in
TP-26-WB	72" Min	220" Min	18 - #4 - Main Bars 24 - #4 - Temperature Bars	4 in - Long Bars 8 in - Short Bars	1 in	8 in
TP-30	72" Min	198" Min	18 - #4 - Main Bars 24 - #4 - Temperature Bars	4 in - Long Bars 8 in - Short Bars	1 in	10 in
TP-30-WB	72" Min	220" Min	18 - #4 - Main Bars 24 - #4 - Temperature Bars	4 in - Long Bars 8 in - Short Bars	1 in	8 in
TR-19 *	24" Min	24" Min	4 - #4 Bars 8 Bars Total	6 in - Each Way	3/4 in	5 in
FL-25 *	24" Min	24" Min	4 - #4 Bars 8 Bars Total	6 in - Each Way	3/4 in	5 in
TR-25 *	24" Min	24" Min	4 - #4 Bars 8 Bars Total	6 in - Each Way	3/4 in	5 in
TR-30 *	48" Min	48" Min	4 - #4 Bars 8 Bars Total	6 in - Each Way	3/4 in	5 in
TR-33 *	72" Min	72" Min	12 - #4 Bars 24 Bars Total	6 in - Each Way	3/4 in	5 in
TR-35 *	72" Min	72" Min	12 - #4 Bars 24 Bars Total	6 in - Each Way	3/4 in	5 in
TR-50 *	72" Min	72" Min	12 - #4 Bars 24 Bars Total	6 in - Each Way	3/4 in	5 in
TR-75 *	72" Min	72" Min	12 - #4 Bars 24 Bars Total	6 in - Each Way	3/4 in	5 in

\* Four Separate Slabs Formed at each Post.

Note 1: An additional layer of 6 x 6 - 10/10 WWF at mid height of new slab would be advisable in any extremely hot or cold climate to control cracking due to temperature fluctuations and shrinkage.

At anchor bolt locations only keep WWF mesh below the elevation of the anchorage to avoid drilling interference with the wire.

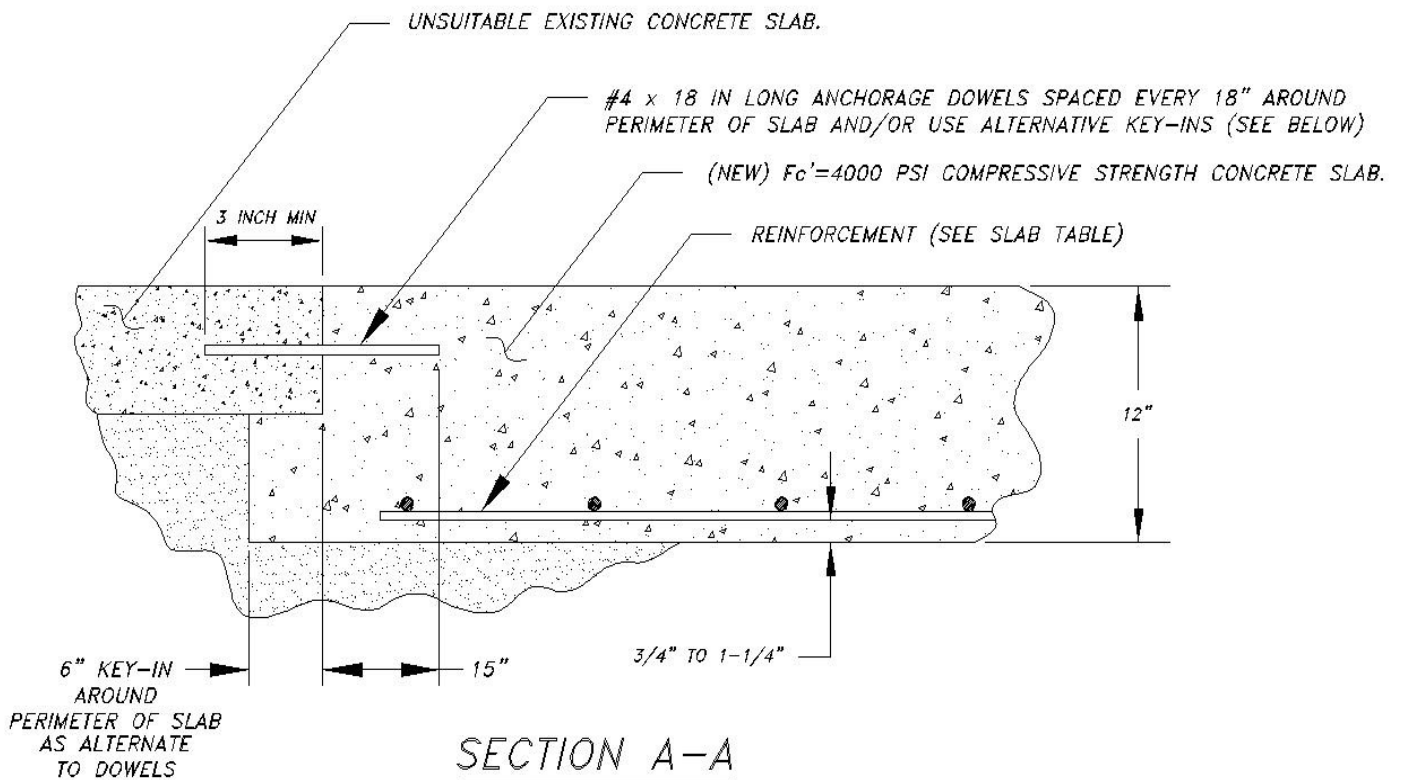
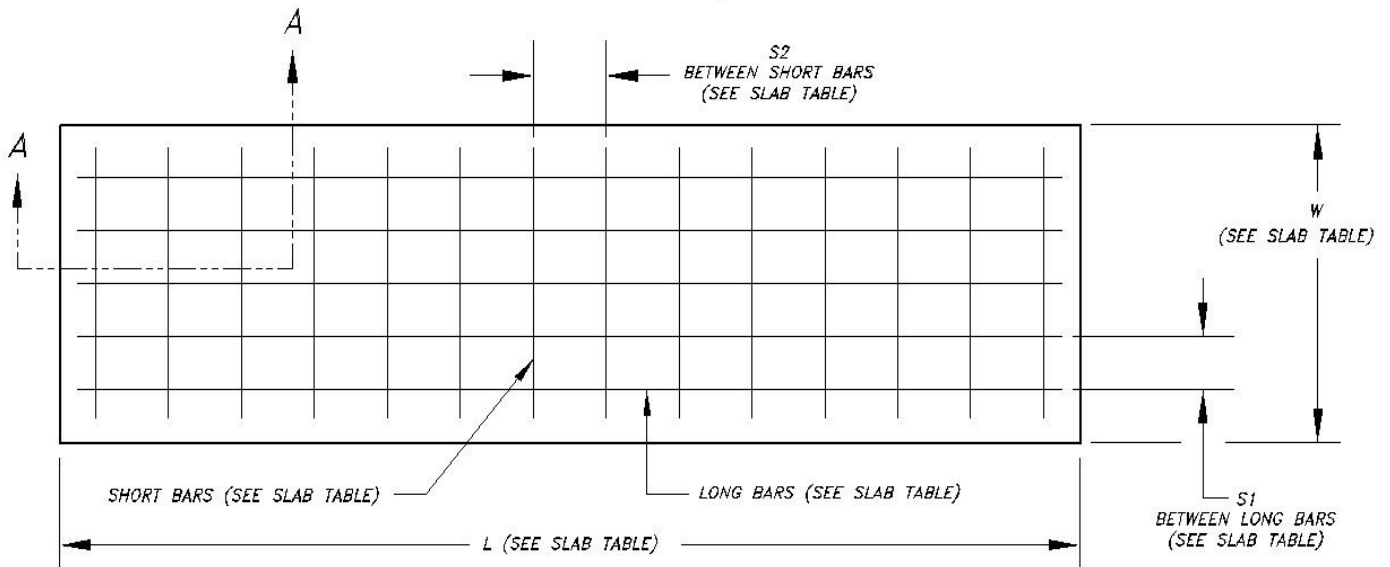
Note 2: The main reinforcing and lower temperature steel shall be Grade 60 deformed bars

Note 3: The tolerance on spacing of the bars in each direction shall be the value shown, plus or minus 1 inch. In addition, the number of bars specified in the table must be used.

Note 4: The concrete outline dimensions and the reinforcing shown are for a foundation bed allowable bearing capacity of not less than 2,000 lb/sq ft (1 ton per square foot). Many clays, and most all firm clay, hard clay, sand & clay mixes, dry sands, coarse dry sands, dry sand and silt mixes, sand and gravel mixes, and gravel type soils meet or exceed this allowable bearing capacity. If there is question regarding the foundation bed allowable bearing capacity, a soils testing engineer should be consulted. Situations where the allowable bearing capacity is lower than this value will require special attention.

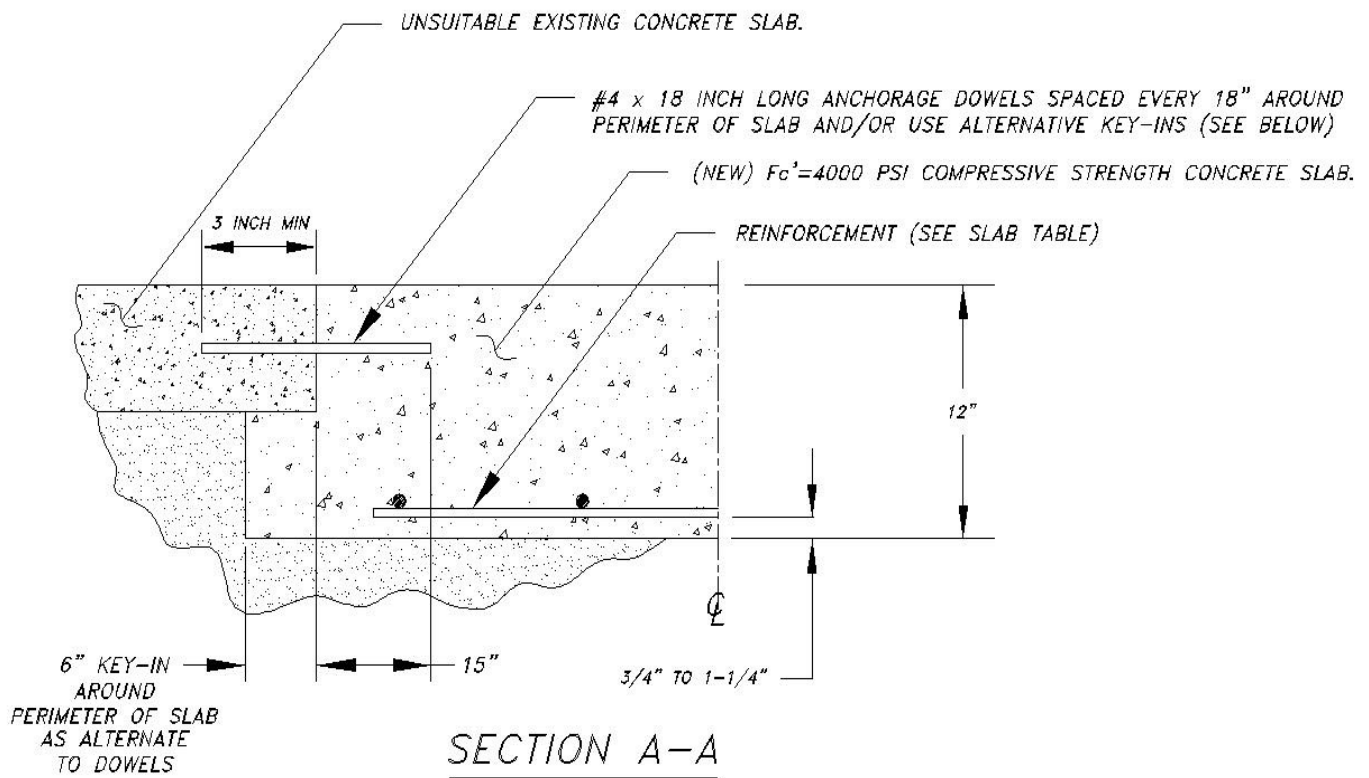
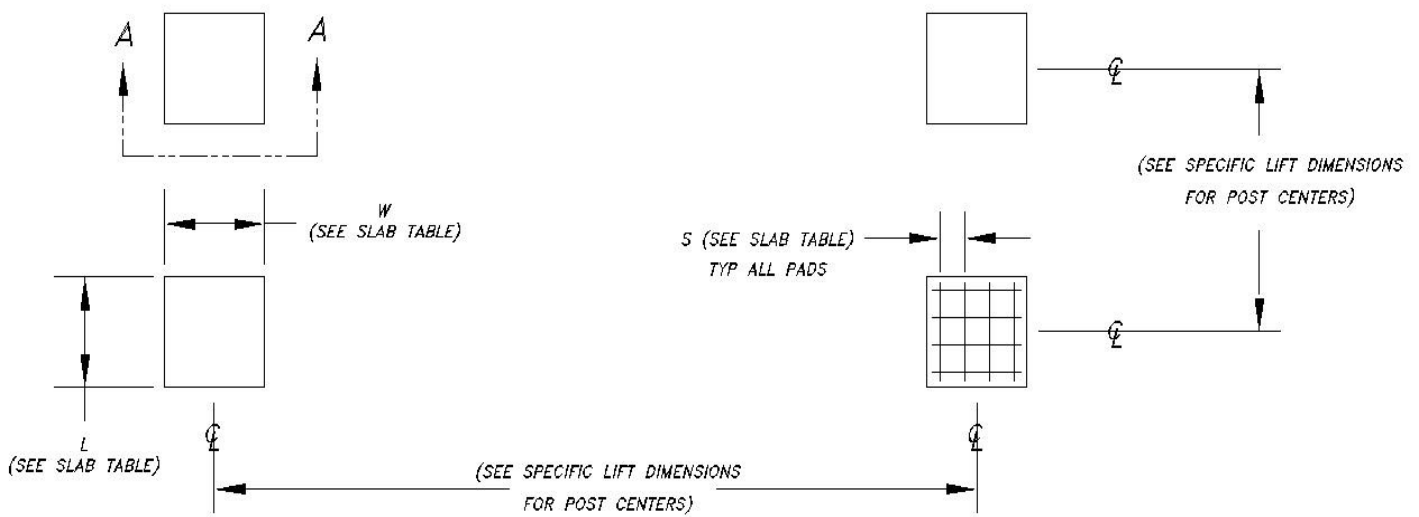
# NEW RECOMMENDED SLAB DESIGN FOR 2-POST LIFTS

FILE: MAN066  
DATE: 2/98  
REV DATE: 7/2003



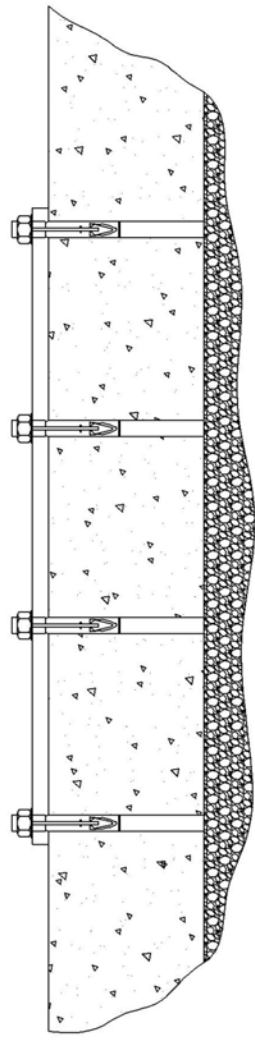
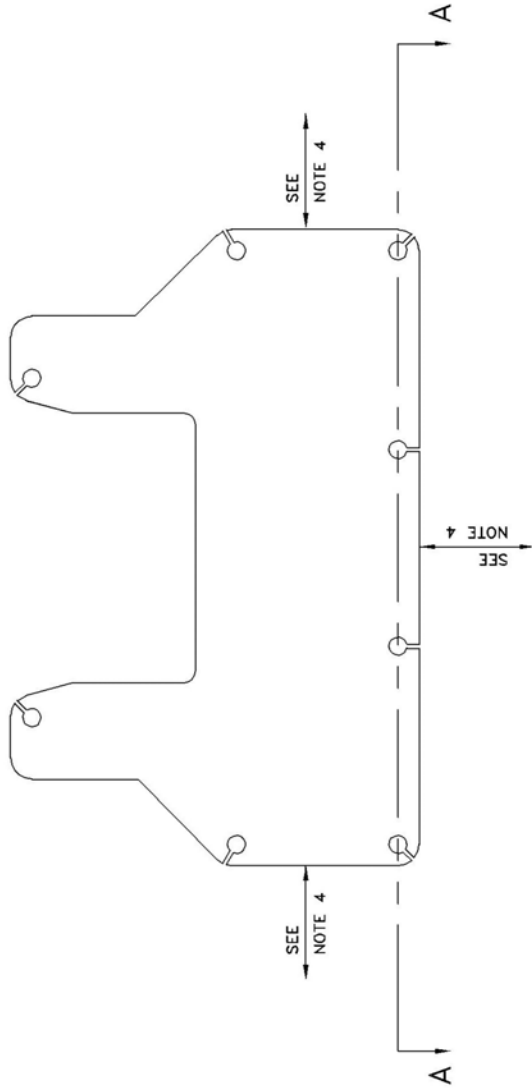
# NEW RECOMMENDED SLAB DESIGN FOR 4-POST LIFTS

FILE: MAN089  
DATE: 10/00  
REV DATE: 7/2003



REV.	DESCRIPTION	DATE	BY	APP'D.
△				

TYPICAL BASE PLATE DETAIL  
(SYSTEM IA SHOWN BELOW - 8 ANCHORS PER BASE PLATE)



BASE PLATE ANCHORING INSTRUCTIONS:

1. LOCATE POSTS IN DESIRED LOCATION OF BAY, PER LIFT SETUP DIMENSIONS. REFER TO LIFT MANUAL FOR INSIDE DIMENSIONS OF COLUMNS, ETC.  
(FOR SYSTEM IA-10, THE INSIDE POST DIMENSION IS 120")
2. MATCH DRILL ALL BASE PLATE HOLES. REFER TO ANCHOR BOLT INSTALLATION SPECIFICATIONS ATTACHED FOR DRILL SIZE. (3/4" DIAMETER ORIGINAL WEJ-IT STYLE EXPANSION ANCHOR BOLTS).
3. INSTALL ANCHORS PER ANCHOR BOLT INSTALLATION SPECIFICATIONS ATTACHED. SHIM UNDER BASE PLATE AS NEEDED TO ENSURE THAT POSTS ARE SQUARE AND PLUMB (MAXIMUM OF 1/4") WITH COLORED SHIMS PROVIDED (HORSESHOE SHAPED).
4. ALL ANCHORS MUST BE A MINIMUM OF 6" AWAY FROM ANY EXPANSION SEAM, CONTROL JOINT, OR OTHER FLOOR INCONSISTENCIES.
5. DRILLING THRU ENTIRE SLAB THICKNESS IS PREFERRED WHEN POSSIBLE. THIS ALLOWS ANCHORS TO BE HAMMERED FLUSH TO CONCRETE IF LIFT IS RE-LOCATED.

C-SIZE

NOTICE OF CONFIDENTIAL INFORMATION

INFORMATION CONTAINED HEREIN IS CONFIDENTIAL AND PROPERTY OF MOHAWK RESOURCES LTD. IT SHALL BE USED SOLELY FOR PURPOSES OF INSPECTION, INSTALLATION, OR MAINTENANCE. THE INFORMATION SHALL NOT BE USED OR DISCLOSED BY THE RECIPIENT FOR ANY OTHER PURPOSES WHATSOEVER.

NOTES:

1. REMOVE ALL SHARP CORNERS & EDGES.
2. FINISH TO BE 125 RMS.
3. WELDING MEDIUM SHALL CONFORM TO AWS SPECIFICATIONS TO E-70XX ELECTRODES OR E-70TI CODE 5.3 FLUX CORE WIRE ONLY.

TOLERANCES:

ANGULAR ± 1°  
DIMENSIONAL ± .030  
DECIMAL ± .008  
XXX 0.XXX

FILE NAME

ZZ912  
NEXT ASSEMBLY

CHECKED

R.V.  
DATE 2/05

SCALE

1/4

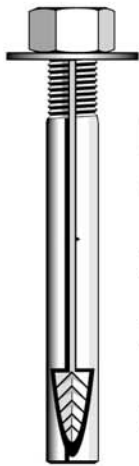
DRAWN

r/w/7089

APPROVED

MOHAWK RESOURCES LTD.

<u>TITLE</u>	<u>FROM</u>
Base Plate Anchoring Detail	N/A
<u>WEIGHT</u>	<u>DRAWING NUMBER</u>
N/A	ZZ912



# The Original **wej-it**® Wedge Anchors

## KEY FEATURES/BENEFITS

- **Time-Tested, Proven Reliability.** An industry standard for over 45 years.
- **Fully Assembled and Ready to Use.** Unparalleled job-site convenience.
- **BOLT SIZE IS HOLE SIZE.®** Allows precision placement of equipment through pre-drilled holes.
- **Exclusive "Positive Wedge Connections."** Minimizes wedge loosening due to vibratory loads.



## SPECIFICATIONS, APPROVALS AND LISTINGS

TYPE	
Zinc Plating	ASTM B-633, Type III, SCI
ICBO-ES	Report #1821
City of Los Angeles	#RR 24939
DOT	Please call Customer Service for specific information by state.
Federal Specifications	QQZ-325C, Type II, Class 3 (Clear Chromate added) FFS-325, Group II, Type 4, Class 1

## MAXIMUM TENSILE AND SHEAR CAPACITY FOR STATIC LOADS

Anchor & Hole Size	LIMESTONE AGGREGATE			UNREINFORCED STONE AGGREGATE CONCRETE								UNREINFORCED LIGHTWEIGHT (IDEALITE)		
	Embedment (in)	2000 psi Tension (lbs)	2000 psi Shear (lbs)	ZIN PLATED		ARBON STEEL		5000 psi		7000 psi		Embedment (in)	5000 psi Tension (lbs)	5000 psi Shear (lbs)
1/4	1 1/8	1132	1211	1 1/8	1320	1751	1760	2316	2464	2494	1 1/2	1861	1947	
1/4	1 3/4	1256	1211	1 1/2	1856	1751	2473	2316	3462	2494	•	•	•	
5/16	1 1/4	1308	1210	1 1/4	2057	1839	2742	2530	3939	3439	1 1/2	2493	3064	
5/16	2	1181	1210	1 3/4	2389	1839	3185	2530	4459	3439	•	•	•	
3/8	1 1/4	994	1223	1 1/2	2876	4286	3834	5213	5368	5658	1 3/4	3125	4289	
3/8	4	1728	1223	4	3488	4286	4650	5213	6510	5658	•	•	•	
1/2	1 3/4	1542	3009	2 1/4	3473	7138	5789	10748	8105	11550	2 1/4	4778	9833	
1/2	6	2695	3009	5	4809	7138	8015	10748	11221	11550	•	•	•	
5/8	•	•	•	3 1/2	7582	10719	12636	15583	17690	16700	2 1/2	6455	12500	
5/8	•	•	•	4 3/4	9179	10719	15299	15583	21419	16700	•	•	•	
3/4	•	•	•	3	11579	15537	19299	21000	27019	23103	3 1/2	17293	19050	
3/4	•	•	•	7	15444	15537	25740	21000	36036	23103	•	•	•	
7/8	•	•	•	4 1/2	15266	•	25444	25099	33622	28718	•	•	•	
7/8	•	•	•	7	16992	•	28320	25099	39648	28718	•	•	•	
1	•	•	•	5 1/2	16351	•	27252	33083	38153	35700	4 1/2	21616	31666	
1	•	•	•	7	17837	•	29728	33083	41619	35700	•	•	•	
Source	1			2								2		

Sources (available upon request): 1) University of Texas, Austin, TX (using new ICBO-ES testing criteria); 1993. 2) AA Engineers & Associates, Inc., Denver, CO; 1981.

## EDGE DISTANCE AND SPACING REQUIREMENTS

Embedment (E) in Anchor Diameters (d)	Spacing	Edge Distance
E < 6d (shallow)	3.50E	1.75E
6d ≤ E ≤ 8d (standard)	2.00E	1.00E
8d < E (deep)	1.50E	0.75E

## NOTES:

- Information provided only for the use of a qualified design engineer. Use of technical data by persons not qualified could cause serious damage, injury, or even death.
- Ultimate values shown. For static loads, use one-fourth of the maximum tensile and shear capacities for the recommended 4:1 safety factor.



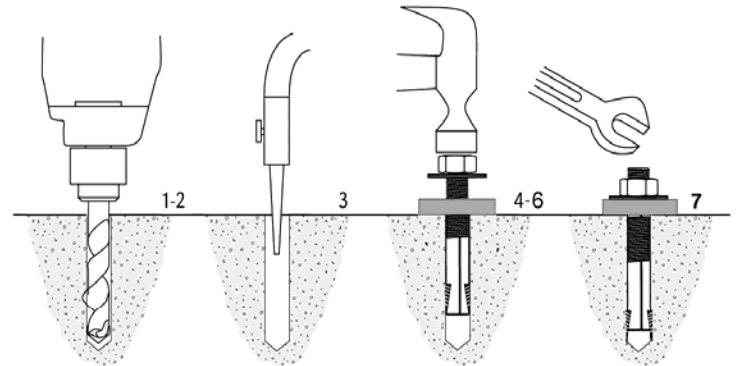


## ORDER INFORMATION

Catalog Number	Anchor Diameter & Length (in)	Minimum Embedment (in)	Thread Length (in)	Quantity Box/ Carto
1413	1/4 x 1 3/4	1	1/2	100/600
1423	1/4 x 2 3/4	1	1/2	100/600
1430	1/4 x 3	1	1/2	100/600
5620	5/16 x 2	1 1/4	5/8	100/600
5630	5/16 x 3	1 1/4	5/8	100/600
3820	3/8 x 2	1 1/2	3/4	100/600
3823	3/8 x 2 3/4	1 1/2	3/4	100/600
3832	3/8 x 3 1/2	1 1/2	3/4	50/300
3850	3/8 x 5	1 1/2	3/4	50/300
3860	3/8 x 6	1 1/2	3/4	50/300
1223	1/2 x 2 3/4	2	1	50/300
1232	1/2 x 3 1/2	2	1	50/300
1250	1/2 x 5	2	1	25/150
1260	1/2 x 6	2	1	25/150
1270	1/2 x 7	2	1	25/150
5832	5/8 x 3 1/2	3	1 1/4	25/150
5842	5/8 x 4 1/2	3	1 1/4	25/150
5850	5/8 x 5	3	1 1/4	20/120
5860	5/8 x 6	3	1 1/4	15/90
5870	5/8 x 7	3	1 1/4	15/90
3440	3/4 x 4	3	1 1/2	18/108
3450	3/4 x 5	3	1 1/2	12/72
3460	3/4 x 6	3	1 1/2	12/72
3470	3/4 x 7	3	1 1/2	10/60
3482	3/4 x 8 1/2	3	1 1/2	10/30
3410	3/4 x 10	3	1 1/2	10/30
7880	7/8 x 8	4 1/2	1 3/4	10/30
7810	7/8 x 10	4 1/2	1 3/4	10/30
7812	7/8 x 12	4 1/2	1 3/4	5/15
1080	1 x 8	5 1/2	2	10/30
1010	1 x 10	5 1/2	2	5/15
1012	1 x 12	5 1/2	2	5/15

## INSTALLATION INSTRUCTIONS - MOHAWK LIFTS

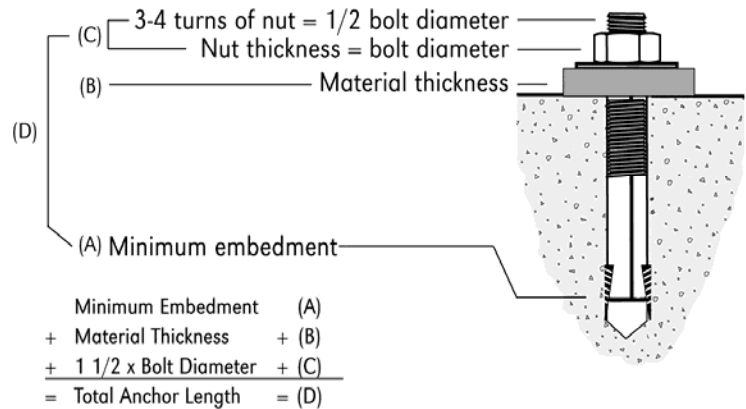
1. Drill the hole perpendicular to the work surface.\* To assure full holding power, do not ream the hole or allow the drill to wobble.
2. Drill the hole deeper than the intended embedment of the anchor, but not closer than two anchor diameters to the bottom (opposite) surface of the concrete.
3. Clean the hole using compressed air and a nylon brush. A clean hole is necessary for proper performance.
4. For ease of installation, make certain that the spear heads are located up against the wedge pockets.
5. Turn the nut on to the anchor until contact is made with the top of the spears and the bottom of the washer. Insert anchor into hole.
6. Tap anchor into hole with a 2 1/2 lb. hammer until the washer rests solidly against fixture.
7. Tighten the nut to not less than 3 full turns but not more than 5 turns past the hand tight position. Use of an Impact wrench for Installation of the anchor is NOT recommended.



## INSPECTION & MAINTENANCE INSTRUCTIONS

1. Verify torque on anchors to 85 Ft. Lbs. for future/annual inspections.
- \* Always wear safety glasses. Follow the drill manufacturer's safety instructions. Use only solid carbide-tipped drill bits meeting ANSI B212.15 diameter standards as listed on back cover.

## LENGTH SELECTION GUIDE



REV: 11/06