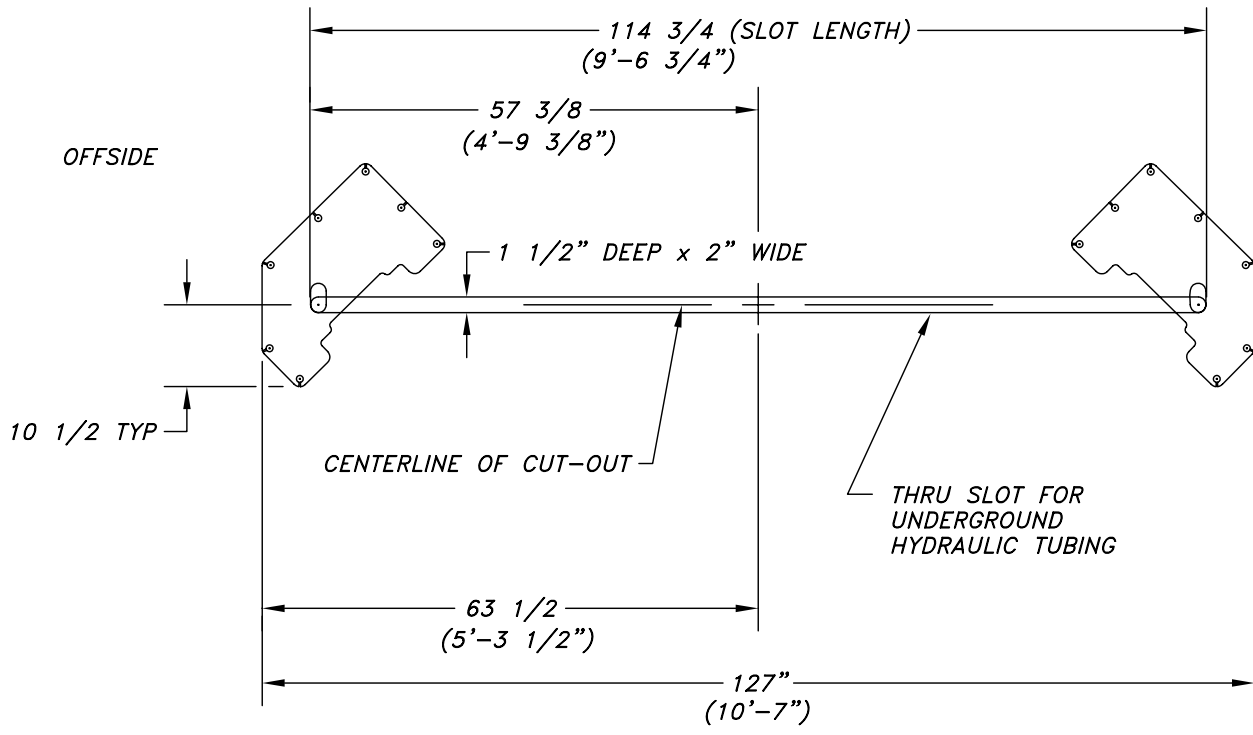


REV.	DESCRIPTION	DATE	BY	APP'D.
△				



RECOMMENDED LAYOUT INSTRUCTIONS

- * LAY OUT LOCATION OF BASE PLATES WITH CHALK LINE.
- * LAY OUT SLOT WITH CHALK LINE.
- * CUT OUT SLOT.
- * LOCATE COLUMNS.
- * RUN HYDRAULIC LINES AND ADJUST BEFORE ANCHORING COLUMNS.
- * ANCHOR COLUMNS.

B-SIZE

NOTES:
 1. REMOVE ALL SHARP CORNERS & EDGES.
 2. UNLESS OTHERWISE SPECIFIED, SURFACE FINISH TO BE 125 RMS.
 3. WELDING MEDIUM SHALL CONFORM TO AWS SPECIFICATIONS TO E-70XX ELECTRODES OR E-70TI CODE 5.3 FLUX CORE WIRE ONLY.

TOLERANCES:
 ANGULAR ± 1°
 FRACTIONAL ± .030
 DECIMAL:
 0.XX ± .030
 0.XXX ± .005

007-011-003

NEXT ASSEMBLY

SCALE ---
 CHECKED
 DATE 5/08

DRAWN dak
 APPROVED
 WEIGHT --- LB.

MOHAWK RESOURCES LTD.
 TITLE SUGGESTED CLEARANCE FOR A-7 IN-GROUND HYDRAULIC LINE
 FROM
 DRAWING NUMBER 007-011-055

